

The Theory of the Harmonic Minor Scale

Steve Stine

Intro Jam

♩ = 180 Freely

The first system of the Intro Jam consists of two staves. The top staff is a treble clef staff in 4/4 time, starting with a key signature of one sharp (F#). It contains a melodic line with various ornaments, including a wavy line above the first measure and a '3' indicating a triplet in the second measure. The bottom staff is a guitar TAB staff with six lines. It contains fret numbers and bar lines corresponding to the melody above. A 'full' wavy line is placed above the first measure of the TAB, and another wavy line is above the third measure. The TAB sequence is: 10-12-10 | 13-12-10 | 12-13-12-10-12-10-9-10-9 | 5-6-5 | 7-5 | 7-5 | 7-5-4 | 6-7 | 4-5-7 | 5-6 | 4.

The second system of the Intro Jam consists of two staves. The top staff is a treble clef staff in 4/4 time, continuing the melodic line from the first system. The bottom staff is a guitar TAB staff with six lines. It contains fret numbers and bar lines corresponding to the melody above. The TAB sequence is: 5-7-8-7-5 | 9-5-8-10-10-9 | 6-9-6-6-9.

The third system of the Intro Jam consists of two staves. The top staff is a treble clef staff in 4/4 time, continuing the melodic line. It features several wavy lines above the notes, indicating vibrato or tremolo. The bottom staff is a guitar TAB staff with six lines. It contains fret numbers and bar lines corresponding to the melody above. The TAB sequence is: 7-9-7 | 10-9-7 | 6-7-6 | 8-7-8 | 6-8-7-5 | 7-5-7-5 | 8-8-7 | 5-4-5.

Musical notation for the first system. The top staff is a treble clef staff with a wavy line above the first measure. The bottom staff is a guitar tablature staff with fret numbers: 2, 1, 2, 4, 5, 2, 1, 2, 4, 5, 5, 6, 4.

Musical notation for the second system. The top staff is a treble clef staff with various note values and slurs. The bottom staff is a guitar tablature staff with fret numbers: 5, 7, 8, 7, 5, 4, 5, 4, 6, 4, 6, 5, 6, 5, 3, 5, 7, 7, 7, 5, 4.

Musical notation for the third system. The top staff is a treble clef staff with various note values, slurs, and wavy lines. The bottom staff is a guitar tablature staff with fret numbers: 5, 4, 5, 4, 7, 4, 6, 7, 5, 7, 8, 7, 5, 8, 5, 8, 7, 5, 4, 5, 7, 7, 5.

C Major Scale or Ionian mode

Leading Tone is a half step from the root

T								
A								
B	8	10	12	8	10	12	9	10

C Major Chord Scale

I	ii	iii	IV	V	vi	vii°
T	5	6	1	3	5	3
A	5	7	2	4	5	4
B	5	7	3	5	7	3
B	3	5	7	3	5	2

A minor Scale or Aeolian mode

T								
A								
B	5	7	8	5	7	8	5	7

A minor Chord Scale

vi	vii°	I	ii	iii	IV	V
T	5	3	5	7	1	3
A	5	4	5	8	1	3
B	7	3	5	9	2	4
B	7	2	3	9	3	5
B	5		5	7	1	3

A Harmonic Minor Scale

Leading Tone is a half step from the root

Leading Tone is a half step from the root

Mixing A Natural Minor (Aeolian) and Harmonic Minor Scales

A Harmonic Minor Scale (Entire Fretboard)

3 5 7 9 12

TAB: 5 7 8 5 7 8 6 7 9 5 7 9 6 9 10 12 13 15 12 13 16 17

A Harmonic Minor Patterns

5 4 6 5 6 4 5

2 1 3 2 3 1 2

5 6 4 5 7 8 7 5 4 5 4 4 6 6 5 6 5 6 5 7 5 7 5 4 2 1 2 3 1 2 3 2 3 1 2

5 4 1 0

5 4 1 0

7 6 8 7 8 6 7 10 9 10 9 10 9 10 12 11 13 12 13 11 12

Usual A minor Chord Progression

Am G F Em

TAB

5	3	1	0
5	3	1	0
5	4	2	0
7	5	3	2
7	5	3	2
5	3	1	0

Usual A Harmonic Minor Chord Progression

Am G F E

TAB

5	3	1	0
5	3	1	0
5	4	2	1
7	5	3	2
7	5	3	2
5	3	1	0

Usual A minor Harmonic Chord Progression

Am G F E Am

A minor Scale A Harmonic minor Scale

TAB

5-8	8-6-5	6-5	4-5	5
7-4-5-7	5-4-7	5-6-5	4-5-7	
7	5	8	6-7	

A Harmonic Minor Chord Scale

Am 5fr, B°, C+ 3fr, Dm 5fr, E 7fr, F, G#° 4fr

T	0	3	5	5	7	1	4
A	1	3	5	6	9	1	3
B	2	4	5	7	9	2	4
A	2	3	6	7	9	3	6
B	0	2	3	5	7	3	5
B						1	4

A Harmonic Minor Chord Scale (7th Chords)

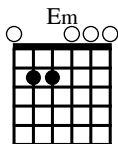
Am(maj7) 5fr, B°7, C+maj7 3fr, C+maj7 7fr, Dm7 5fr, Dm7 10fr

T	5	3	3	9	5	10
A	5	2	4	9	6	10
B	6	3	6	9	5	10
A	6	2	3	7	7	10
B	5	2	3	8	5	12
B						10

E7 7fr, Fmaj7 8fr, Fmaj7 12fr, G#°7 10fr, G#°7

T	7	8	13	12	4
A	9	10	14	10	3
B	7	9	14	12	5
A	9	10	14	11	3
B	7	8	13	11	5
B					4

Guitar Notation Key



CHORD DIAGRAM
It illustrates how to form a chord. The 6th string (thickest) is on the left.

RIGHT HAND FINGERINGS
t (thumb) m (middle) i (index) r (ring)

ACCENT
Play this note louder

STACCATO
Play this note short

STANDARD NOTATION is written on a five-line staff.

TABLATURE represents the six strings of the guitar. The first string (thinnest) is on the top.

Hammer-On

Pick the first note then sound the second by fretting it without picking.

Pull-Off

Pick the first note then sound the second by pulling the finger off without picking.

Vibrato

Bend and release the note continuously and smoothly.

Wide Vibrato

Bend and release the note continuously and widely to alter the pitch.

Whole Step Bend

Pick the note then bend the string up one step.

Half Step Bend

Pick the note then bend the string up a half step.

Grace Note Bend

Bend the string up immediately.

Blues Bend

Pick the note then bend the string up slightly.

Bend and Release

Pick only the first note then bend the string up one step. Finally release the bend.

Pre-Bend

Before picking the note, bend the string up.

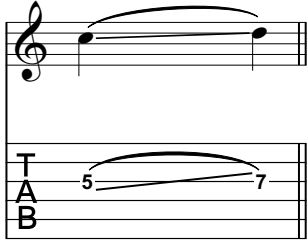
Pre-Bend and Release

First bend the string up then pick the note and finally release the bend back.

Unison Bend

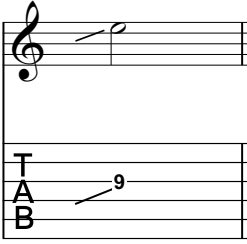
Pick both notes at the same time, immediately bend up the lower to the pitch of the higher.

Legato Slide



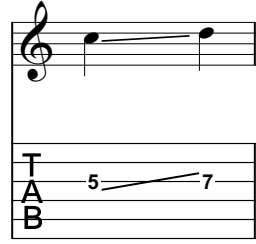
Pick the first note, then slide to the next without picking the last note.

Airplane Slide



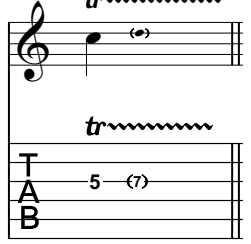
Quickly slide into the note.

Shift Slide



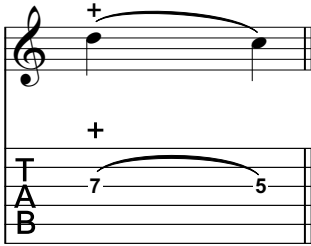
Pick the first note, then slide to the next, then pick the last note as well.

Trill



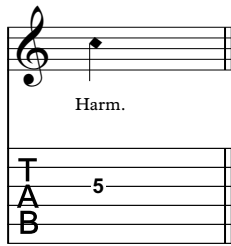
Quickly alternate between the two notes by continuously hammering on and pulling off.

Tapping



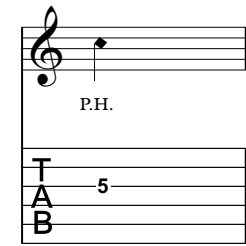
Fret the first note by tapping it with a finger of your picking hand, then pull off to the second note.

Natural Harmonic



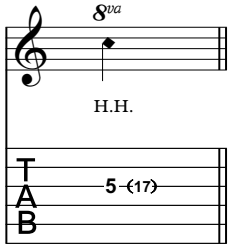
Gently touch the string above the fretwire without pressing it. Pick it. Finally bring your finger back immediately.

Pinch Harmonic



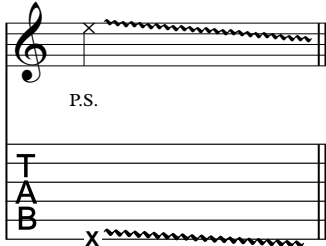
Pick the note normally, immediately touch the string with the thumb of your picking hand.

Harp Harmonic



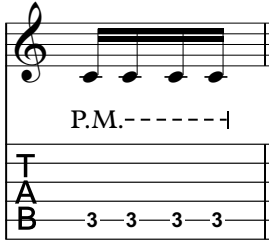
Gently touch the string above the indicated fretwire (in brackets) with your picking hand's index finger while the pick strikes the fretted note.

Pick Scrape



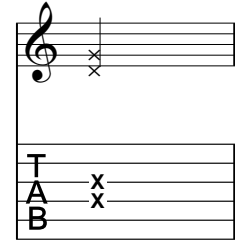
Scrape the edge of the pick along the wound strings.

Palm Muting



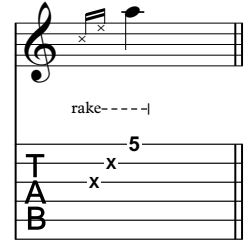
Gently rest the palm of your picking hand near the bridge to partially mute the notes.

Muffled Strings



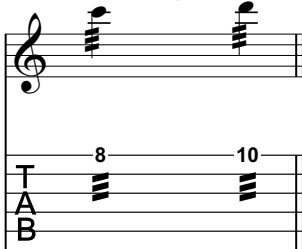
Gently rest your fret hand across the strings to obtain a percussive sound by striking them with your picking hand.

Rake



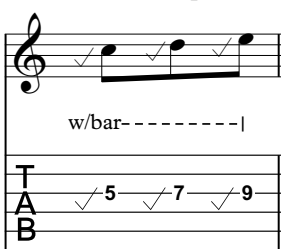
Quickly drag the pick across the strings. Mute the first two strings.

Tremolo Picking



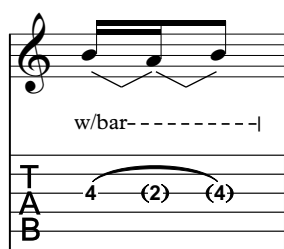
Continuously pick the notes as rapidly as possible.

Vibrato Bar Scoop



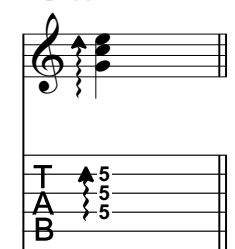
Pull the bar down just before tapping or picking the note, immediately release the bar.

Vibrato Bar Bend



Pick the first note, then pull the whammy bar down to the indicated pitch (in brackets), finally release the bar back.

Arpeggiate



Roll the pick across the notes as indicated by the arrow.

Repetition Signs



Repeat bars between signs

Repetition Signs



Repeat bars between signs. First time play the first ending, second time continue through the second ending.

D.C. al Fine

Go back to the beginning of the song, then play until the mark "Fine", that means "end".

D.S. al Coda

Go back to the sign (§), then play until the bar marked (To Coda ϕ), then skip to the section marked (ϕ Coda)